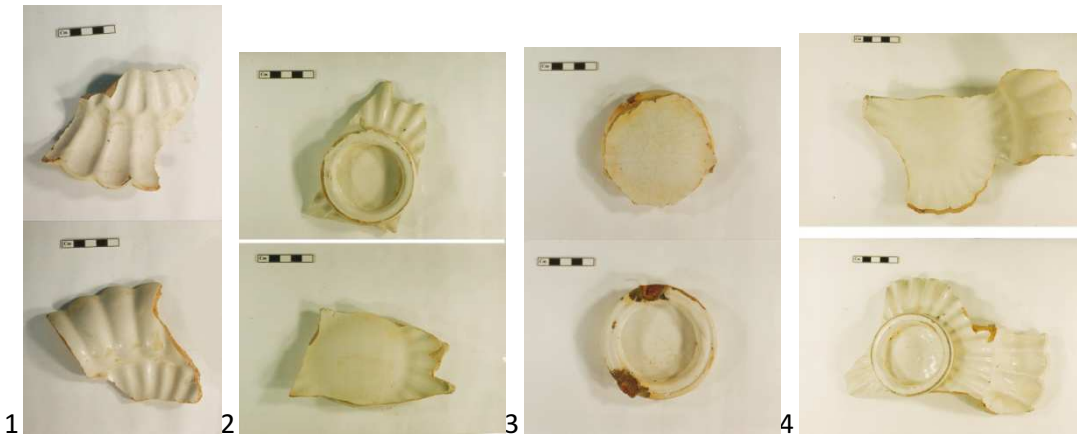


Types of faience recovered from the wreck of *de Melckmeyt* in 1993

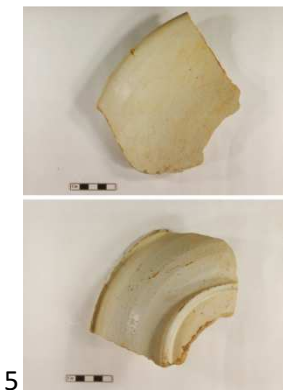
Vilhjálmur Örn Vilhjálmsson 2013

"Witte faience"

I

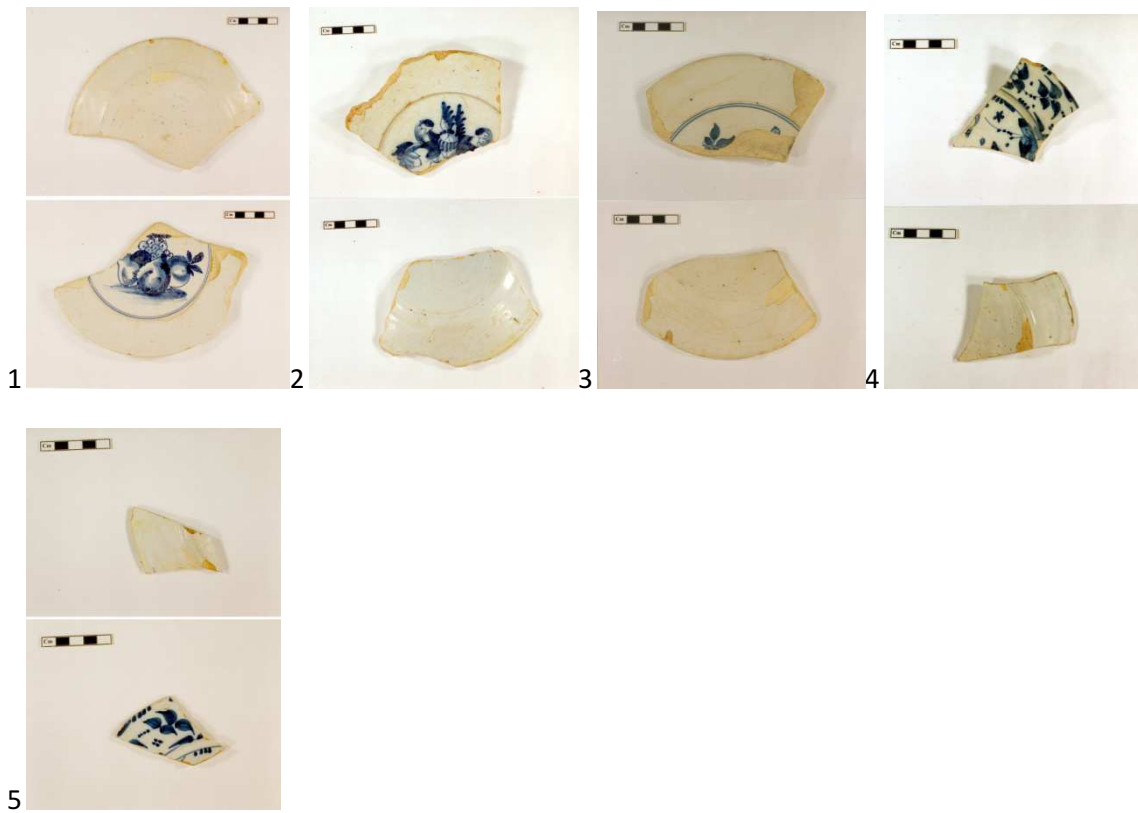


French "Plooieschotels" (from Nevers or Rouen)



Bowl, possibly Spanish/Portuguese ? (Ref. Nina Jaspers)

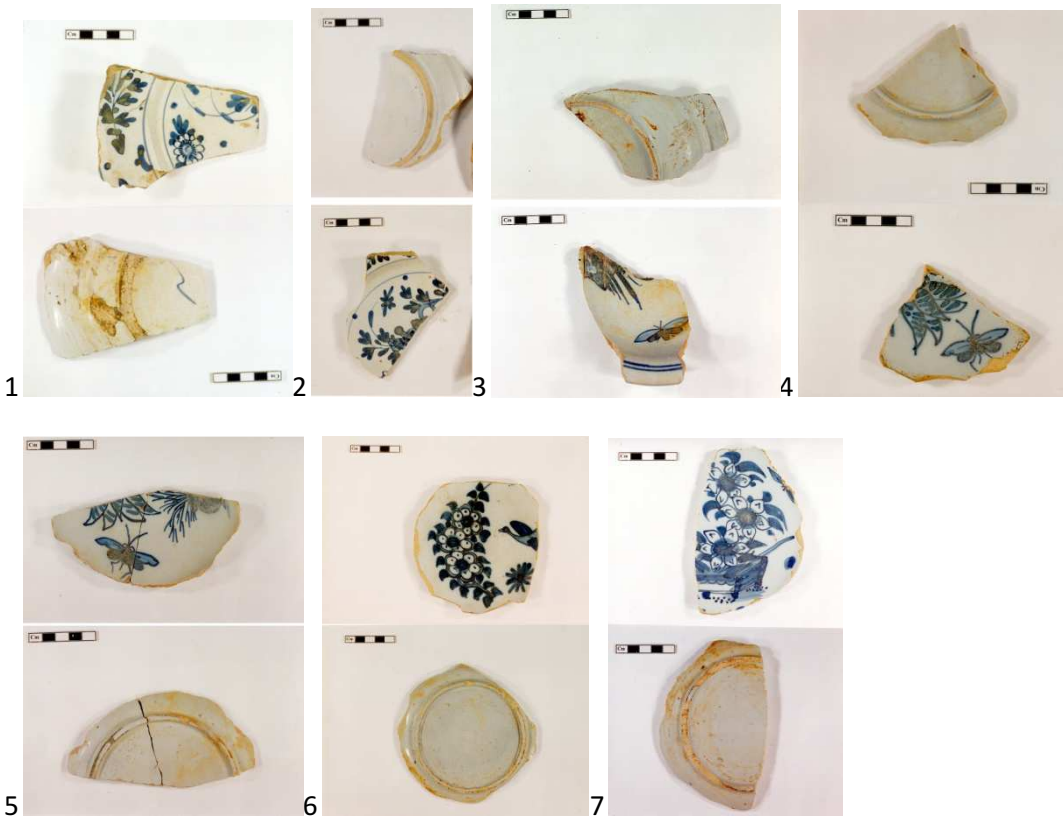
II



Flat plates, tin-glazed front and base. Base without a foot-rim. ; Motifs: Pears, code of arms, flower decorations.

I

III



Flat plates with a base with foot rim. Decoration motifs: Flowers, flies, and a Japanese style flower pot. The glaze has a blue-grayish "haze"

Dutch faience with lead-glazed base

I



1



2



3



4



5



6



7



8



9



10



Large semi-deep plates (or rather platters) with lead-glazed base and a broad foot rim. Decoration motifs: Chinese motif *Duck in the pond*, flower-pots, apples and pears, house with a tree.

II



Small plates with a lead or salt-glazed base without a marked foot-rim. Decoration: Four dots on the "rims" (lips) of the plates.